

# THE AFB BAKERY DISHWASHER

*A Low Energy, Time-Saving Dishwasher You Can Rely On.  
Washes Sheet Pans, Pots, Dishes, Glassware and Flatware.  
The Economical Answer to Tall Warewashing Needs.*

- **Quality and Reliability**
- **Effective washing and sanitizing of bakery trays & pots and pans**
- **Every rack washed in clean water with a complete fresh water purge with every cycle**
- **High pressure, high volume 1.5 HP pump**
- **Available in either 90, 120, or 150 second time cycles**
- **27 1/2" door opening with safety interlock**
- **Holds standard 20"x20" racks**
- **Built-in chemical dispenser**

| TECHNICAL DATA                  | FAMILY MODELS |     |      |
|---------------------------------|---------------|-----|------|
|                                 | AFB           | AB  | A-IB |
| NSF Rated Capacity (Racks/Hour) | 37            | 26  | 20   |
| Wash Time (In Seconds)          | 45            | 60  | 75   |
| RINSE TIME (In Seconds)         | 30            | 45  | 60   |
| DWELL (In Seconds)              | 15            | 15  | 15   |
| Total Cycle Time (In Seconds)   | 90            | 120 | 150  |

|   |   |
|---|---|
| WATER TEMPERATURE OF SUPPLY WATER (NSF) | 130° F MINIMUM<br>or 54.4 Celsius                                     |
| WATER CONSUMPTION (NSF RATED)           | 2.5 GALS PER CYCLE<br>or 9.46 liters/cycle                            |
| MOTOR RATING                            | (1.125 KW) 1.5 HORSEPOWER   |
| ELECTRICAL RATING (NEC)                 | 115 Vac, 20 amp breaker,<br>50/60Hz, 1 phase                          |
| RACK SIZE                               | STANDARD 19.75" X 19.75"<br>or 50.2 x 50.2 cm                         |
| DOOR CLEARANCE                          | 27.5" TALL X 20.5" WIDE<br>or 69.8 x 52.1 cm                          |
| WATER INLET                             | (1/2") F.P.T.   |
| DRAIN SIZE                              | (1-1/2") F.P.T.   |
| HEIGHT                                  | ADJUSTER FEET WILL GIVE<br>MIN: 65.5" MAX: 66.6" or 166.3 to 169.1 cm |
| HEIGHT (W/DOORS OPEN)                   | MIN: 94" MAX: 95.125"<br>or 238.7 to 241.6 cm                         |
| WIDTH (OVERALL)                         | 30"<br>or 76.2 cm   |
| WIDTH, TABLE TO TABLE (INLINE MODEL)    | 25"<br>or 63.5 cm   |
| DEPTH (OVERALL)                         | 35.5"<br>or 90.1 cm   |
| SHIPPING WEIGHT                         | 294 POUNDS<br>or 133.3 kg   |
| SHIPPING VOLUME (CRATED)                | 56.7 CUBIC FEET<br>or 1.58 cu meters                                  |



**Sheet Pans require a Special  
Stainless Steel Dishrack for  
Proper Washing**

900 BLAKE STREET  
EDWARDSVILLE, KANSAS 66111-3820  
PHONE (913) 422-3700 • FAX (913) 422-6630

**ADs**  
**American Dish Service**  
Manufacturers of Ware Washing Equipment

# AFB BAKERY DISHWASHER



## Model AFB SPECIFICATIONS

| TECHNICAL DATA                  | FAMILY MODELS |     |     |
|---------------------------------|---------------|-----|-----|
|                                 | AFB           | AD  | AH  |
| NSF Rated Capacity (Racks/Hour) | 37            | 28  | 23  |
| Wash Time (in Seconds)          | 45            | 80  | 75  |
| Rinse Time (in Seconds)         | 30            | 45  | 60  |
| Dwell (in Seconds)              | 15            | 15  | 15  |
| Total Cycle Time (in Seconds)   | 90            | 120 | 180 |

WATER TEMPERATURE ——— 130° F. MINIMUM OF SUPPLY WATER (NSF) or 54.4 Celsius

WATER CONSUMPTION ——— 2.5 GALS PER CYCLE (NSF RATED) or 9.46 Bar/Minute

MOTOR RATING ——— (1.125 KW) 1.5 HORSEPOWER

ELECTRICAL RATING (REQ) 115 Vol, 20 AMP 50/60Hz, 50/60Hz, 1 phase

RACK SIZE ——— STANDARD 18.75" X 18.75" or 50.2 x 50.2 cm

DOOR CLEARANCE ——— 27.3" TALL X 20.5" WIDE or 69.8 x 52.1 cm

WATER INLET ——— (1-1/2") FPT

DRAIN SIZE ——— (1-1/2") FPT

HEIGHT ——— ADJUSTER FEET WILL GIVE MIN. 80.5" MAX. 96.2" or 186.3 to 188.1 cm

HEIGHT (INDOORS OPEN) ——— MIN. 94" MAX. 95.105" or 238.7 to 241.8 cm

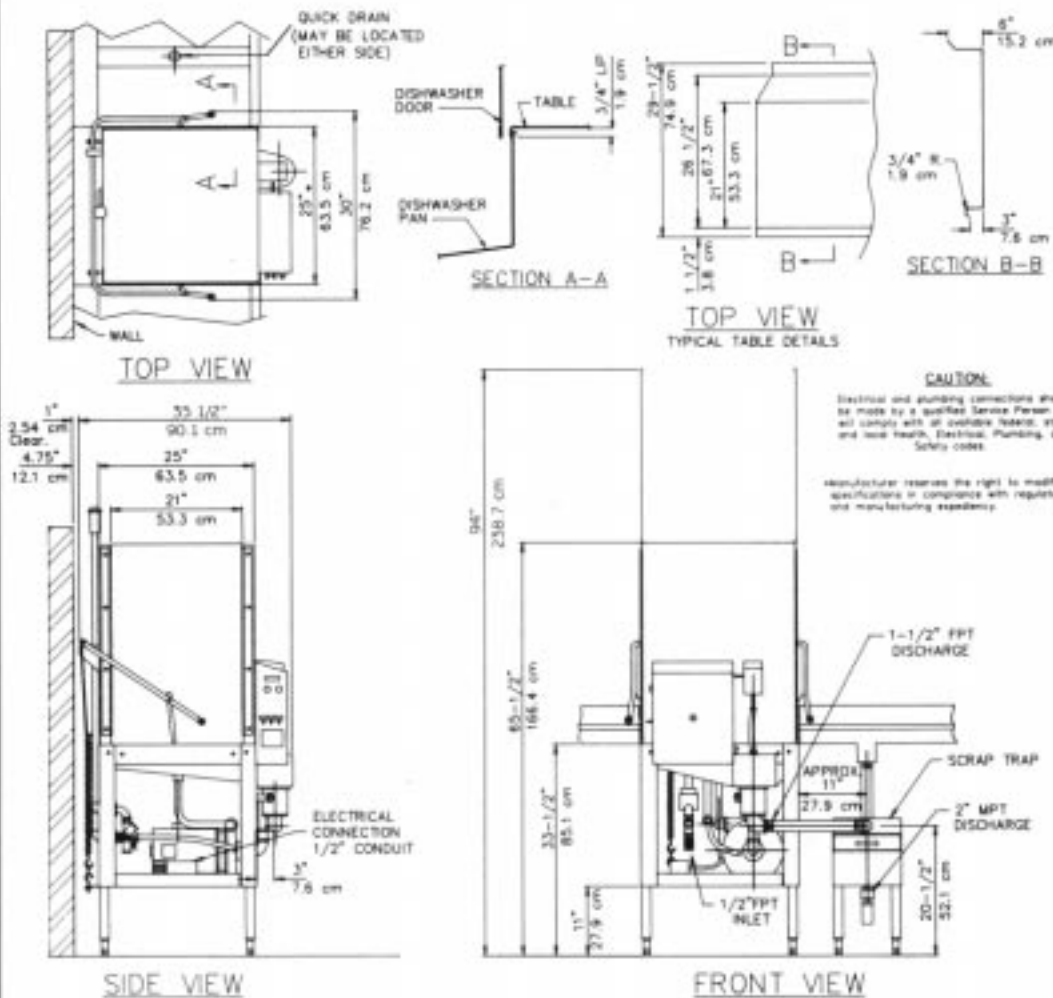
WIDTH (OVERALL) ——— 30" or 76.2 cm

WIDTH, TABLE TO TABLE (INLINE MODEL) ——— 25" or 63.5 cm

DEPTH (OVERALL) ——— 35.5" or 90.1 cm

SHIPPING WEIGHT ——— 284 POUNDS or 133.3 kg

SHIPPING VOLUME (CRATED) ——— 50.7 CUBIC FEET or 1.58 cu meters



**CAUTION:** Certain materials such as aluminum could be damaged when exposed to excessive concentrations of sodium hypochlorite (liquid bleach). Have your chemical supplier check for proper levels of chlorides to prevent damage.



10-1-97

900 BLAKE STREET  
EDWARDSVILLE, KANSAS 66111-3820  
PHONE (913) 422-3700 • FAX (913) 422-6630

**American Dish Service**  
Manufacturers of Ware Washing Equipment